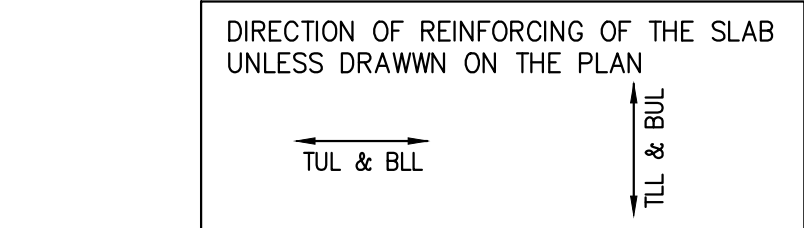


7TH FLOOR FRAMING PLAN

SCALE 1 : 100

- TOP OF SLAB IS AT ELEVATION AS SHOWN ON ARCH. DRAWINGS EXCEPT AS CROSSED AND NOTED ON PLAN.
- CONCRETE STRENGTH AT 28 DAYS SHALL BE:
FOR WALLS AND COLUMNS SEE SCHEDULE
FOR EXT. SLABS 35 MPa
FOR INTERIOR SLABS 25 MPa
FOR BEAMS 35 MPa
CONCRETE EXPOSED TO ELEMENTS SHALL BE 35 MPa WITH 6% TO 8% ENTRAINED AIR.
- FLOOR SLABS ARE DESIGNED FOR FOLLOWING LOADING CONDITIONS :

	S.I.D.	L.L.
STAIRS & BALCONIES	0.50 KPa	4.80 KPa
LOCKERS & STORAGE	1.30 KPa	4.80 KPa
RESIDENTIAL	1.3 KPa	1.9 KPa
TOILETS	1.30 KPa	2.40 KPa
TERRACES	5.0 KPa	4.80 KPa



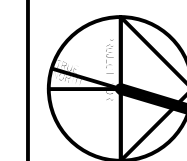
- MINIMUM YIELD STRESS FOR REINFORCING STEEL SHALL BE 400 MPa.
- TEMPERATURE REINFORCING FOR : 200 SLAB IS 106250, 210 SLAB IS 106230.
- NO OPENINGS LARGER THAN 300mm x 300mm ARE ALLOWED IN SLAB OTHER THAN THOSE SHOWN ON DRAWINGS.
- SEE TYPICAL DETAILS ON DRAWINGS S-001 TO S-006.
- SEE GENERAL NOTES ON DRAWING S-001.
- REFER TO ARCH. DRAWINGS FOR SLOPES OF SLAB.
- FOR COLUMN & WALL SCHEDULE SEE DRAWINGS S-301 TO S-306.
- COORDINATE BEAM DEPTH AT DOOR OPENINGS WITH ARCH. DRAWINGS.
- EXTEND TEMP. REINF. TO END OF BALCONIES/OVERHANGS.
- TOP BARS TERMINATING AT EDGE OF SLAB TO HAVE 180° HOOK.

Jablonsky, Ast and Partners
CONSULTING ENGINEERS
1125 LESLIE STREET
DON MILLS, ON, M3C 2G5
TEL: 416-447-7405
FAX: 416-447-2771
E-mail: jg@astint.ca



FIRST FLOOR ELEV. 93.60m

no.	Issued / revised	date
1	ISSUED FOR PERMIT	2014-08-31
2	REV. ISSUED FOR PERMIT	2014-07-10
3	ISSUED FOR PERMIT TENDER	2014-04-27
4	CONSTRUCTION REVIEW	2014-04-01
5	REV. ISSUED FOR PERMIT	2014-01-27
6	ISSUED FOR CONSTRUCTION	2013-05-16
7	UNAPPROVED - PFC	2013-04-26
8	UNAPPROVED - PFC	2013-03-21
9	ISSUED FOR S.I.S.	2013-07-26



Project no: 13015
Scale: 1:100
Drawn by: H.W.
Reviewed by: H.F.
Date started: MARCH 2014

7TH FLOOR
FRAMING PLAN

S-109
2015-07-28